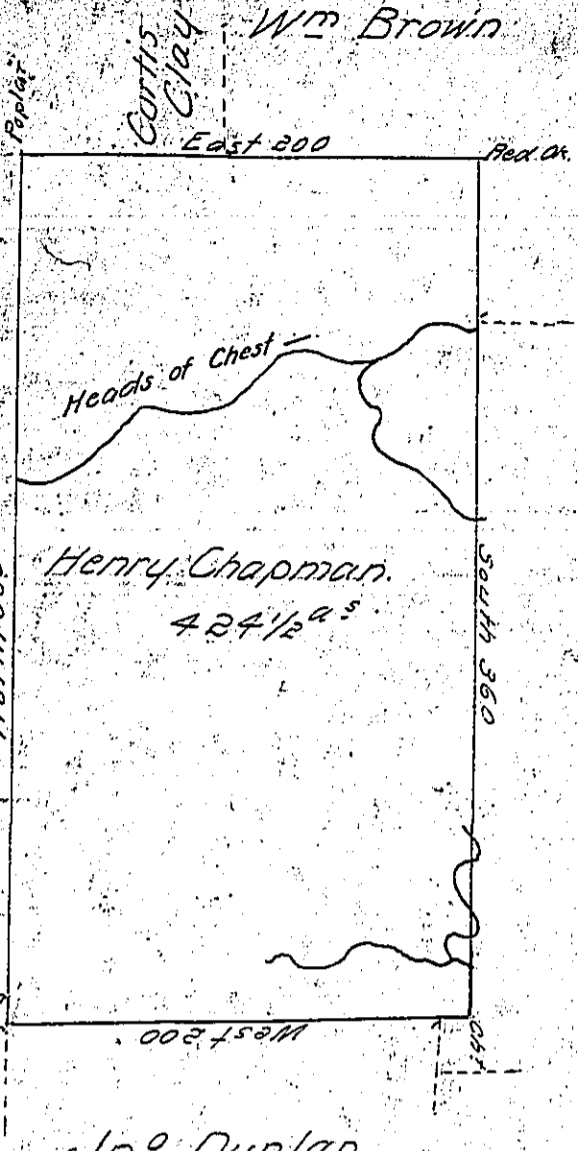


e 154-76

Chas. Marshall II

Sugar Tree

North 360



Isaac Milner

18-4-87

Jno Dunlap

Situate on the head watters of Chest Creek in Huntingdon County contain-
 ing 424 1/2 Acres and the Usual allowance for Roads Surveyed for Henry
 Chapman May 20th 1793 in perservice of a Warrant dated the
 29th Day of Jan^y 1793

(No. S.G. given)

John Canan D.S.

IN TESTIMONY that the above is a copy of the original remaining on file in
 the Department of Internal Affairs of Pennsylvania, made
 conformably to an Act of Assembly approved the 16th day of
 February, 1833, I have hereunto set my Hand and caused
 the Seal of said Department to be affixed at Harrisburg,
 this first day of March 1904



Louise B. Benson
 Secretary of Internal Affairs.